

North Massapequa Fire Department



Santa Run Tracker Instructions

The North Massapequa Fire District residents look forward to our Departments Annual Santa Run every year. While we attempt to cover the entire district during our Santa Run's, it is inevitable that some streets may be missed for various reasons. This tracking option gives all of our residents a chance to find Santa on their own.

As we have done in the past few years, the department will be utilizing a GPS tracking app to share with the community the location of Santa each night. Feedback from the community over the last few years has been overwhelmingly positive and has become part of their families routine to be able to actually track Santa's location around our town with their children.

The information provided here should be used by all companies each night they are out with Santa in the neighborhood.

Points to remember about this application:

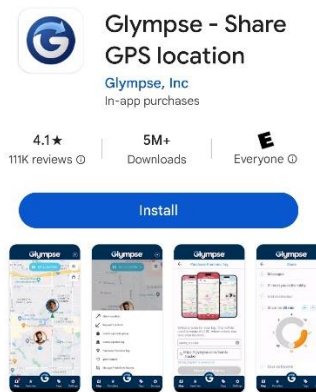
- Use a member's phone that will be with Santa at all times from the beginning to the end. This app relies on your phone's physical location.
- Ensure that you are able to have the phone plugged in because the app uses a lot of battery power while sharing your GPS location.
- Make sure you set an EXPIRATION TIME when starting, long into the future. You can always stop the app from sharing your location when you are finished.
- No account creation is necessary and there is no cost for our purposes.

We will use GLYMPSE to share our GPS location.

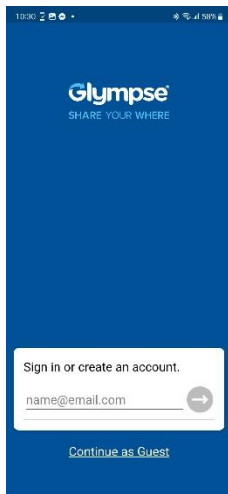


Use the following instructions to ensure that we present a consistent appearance to the community. The instructions below were created using an Android Phone, but everything should be very similar on an Apple phone.

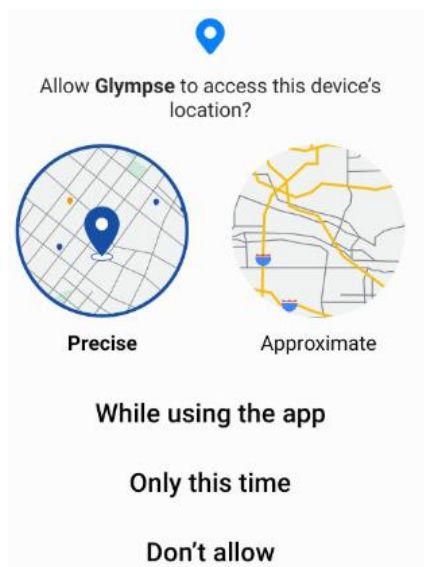
1 – Download and Install the GLYMPSE APP from your app store:



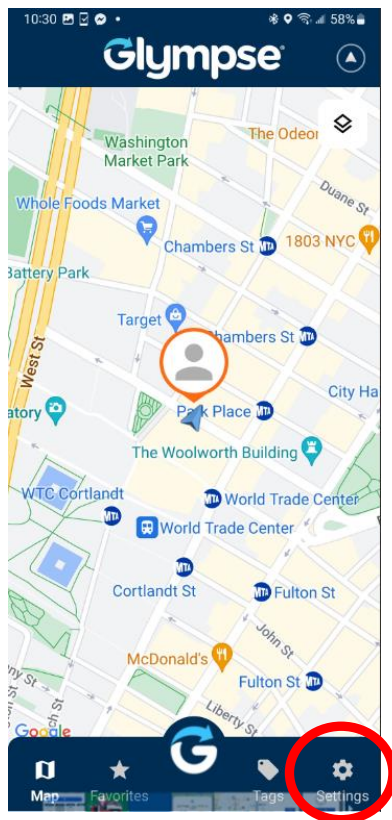
2 – Open the app and choose “CONTINUE AS GUEST”. There is no need to create an account for our purposes.



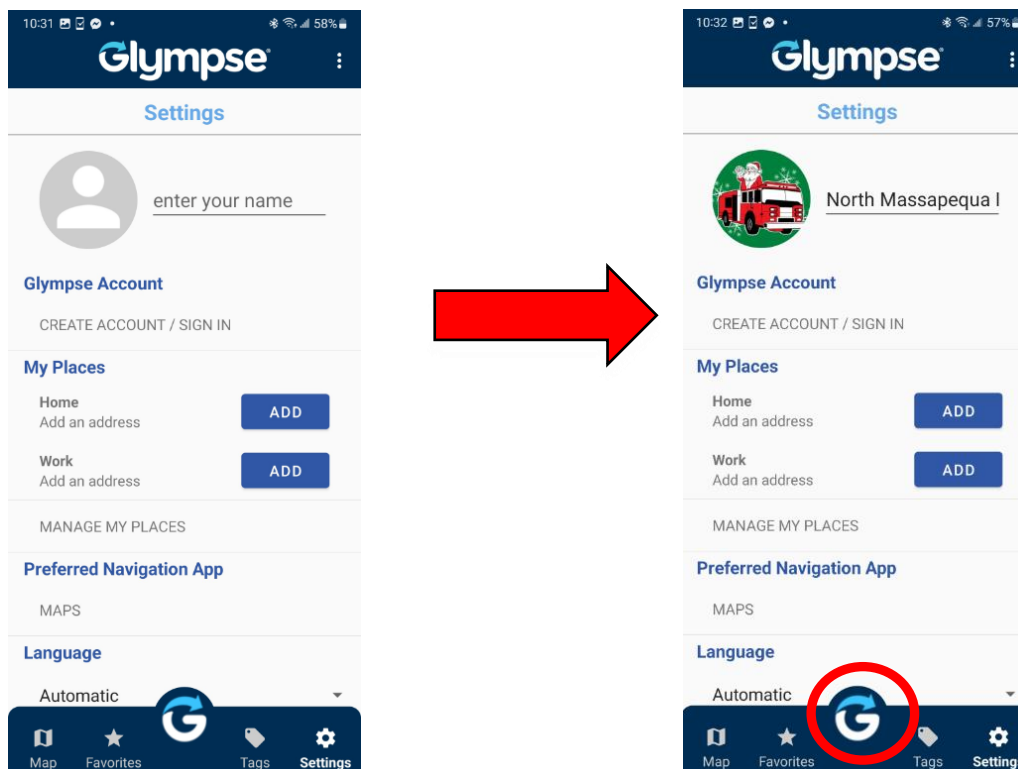
3 – Allow GLYMPSE to access your GPS Location. Your phone’s “LOCATION” must be turned on in order for this app to work. Select “PRECISE” and “WHILE USING THE APP”



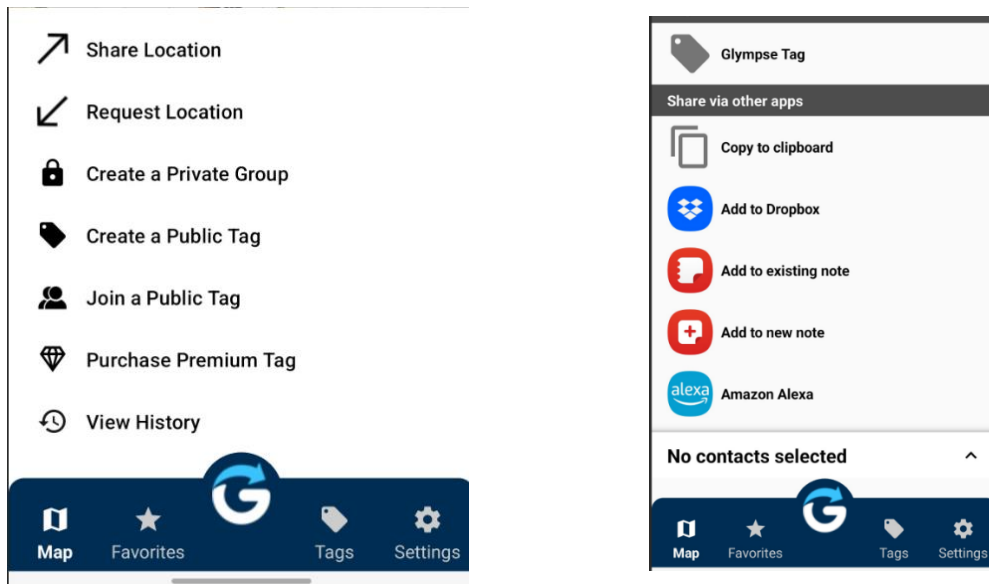
4 – GLYMPSE Home Screen:



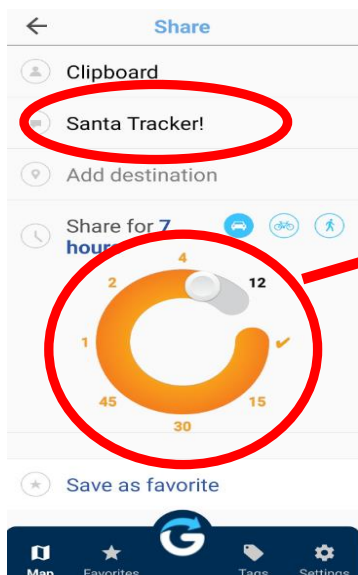
5 – Click on Settings, type “North Massapequa FD” in the Name section. Use the provided Santa Picture to change the profile picture. This will be the image that the public will see on their map as Santa is around town. Once completed click on the “G”.



6 – After clicking on “G”, the following screen will appear. Select “SHARE LOCATION” then select “COPY TO CLIPBOARD”.

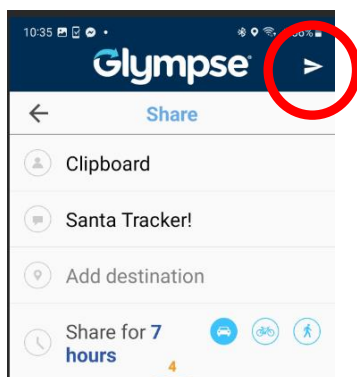


7 – Complete the following screen with the following information:



Make sure that you set the Sharing duration for many hours to ensure that the link stays active for the community. You can stop sharing your location at any time.

8 – Click on the Share Icon:



9 – The GLYMPSE APP will create a link that is copied to your devices clipboard and can be pasted into any social media platform or text message. The link will look something like this...

